



# BAPCo<sup>®</sup> SYSmark<sup>®</sup> 25 User Guide

Revision: 1.9

## Revision History:

- 1.0 Initial version of SYSmark 25 User Guide.
- 1.1 Corrected reference system memory channel configuration information. Licensing information added to Applications section
- 1.2 Corrected syntax for command line installation.
- 1.3 Updated run rules
- 1.4 Updated run rules
- 1.5 Added Yokagawa WT310e to supported power meters for energy test. Updated system configuration and command line options
- 1.6 Updated run rules to clarify publication of relative comparisons
- 1.7 Added information for Windows 11 Virtualization Based Security settings
- 1.8 Updated table of command line switches
- 1.9 Added requirement for 'AutoLogin' and do not connect to Internet during installation

Introduction .....	4
Setup .....	5
Image configuration .....	5
SYSmark 25 installation.....	5
Uninstallation.....	11
Running SYSmark 25 .....	12
SYSmark 25 interface .....	12
Benchmark settings.....	14
Virtualization Based Security .....	5
System Configuration Tool.....	15
Required.....	16
Recommended.....	16
Optional .....	18
System configuration from command line .....	19
Results generation and display .....	20
Viewing additional results.....	20
Results submission.....	21
Submit from SYSmark 25 .....	21
Submit results by web browser .....	21
Automated installation .....	22
Installer exit codes .....	22
Automated execution .....	23
Automated data collection .....	24
Energy Test.....	25
Yokogawa WT310E Meter configuration.....	25
Watts up? Meter configuration .....	25
Tips For Usage.....	27
Best Practices .....	27
Heads Up Display (HUD).....	27

Process idle tasks .....	27
Keyboard/mouse input blocking.....	27
Error handling .....	28
Stopping a run in progress .....	28
Reference system.....	30
Lenovo <sup>®</sup> ThinkCentre™ M720q.....	30
Applications.....	31
Productivity.....	31
Creativity.....	31
Responsiveness* .....	31
Scenarios .....	32
Productivity.....	32
Creativity.....	32
Responsiveness .....	32
Support .....	33
SYSmark <sup>®</sup> 25 Benchmarking Rules v1.3 .....	34
Benchmark Execution .....	34
Full Disclosure Report .....	35
Publication .....	35
Relative Performance.....	36
Availability.....	36
FDR Processing.....	36
Publication of Results on Non-OEM Platforms .....	37

# Introduction

SYSmark 25 is an application based, system performance benchmark designed to assist users in making PC purchasing decisions.

This document is intended as a user manual to assist with the installation, configuration, and execution of SYSmark 25. For a technical overview of SYSmark 25, please download the SYSmark 25 Whitepaper published on the BAPCo website: [www.bapco.com](http://www.bapco.com)

# Setup

Before attempting to install or run SYSmark 25, verify that the test system meets the recommended minimum system configuration for running the benchmark. Visit the [BAPCo Benchmarks](#) YouTube channel for video tutorials to assist with installing and running SYSmark 25.

- **CPU:** 2015 or newer x86 processor (Intel 6<sup>th</sup> Generation Core or AMD 7000 series APU)
- **RAM:** 8 GB
- **HDD/SSD:** 25GB of free space on the primary drive
- **Operating System:** Microsoft® Windows® 10 64-bit version 1803 (RS4) or higher
- **Resolution:** 1280x800 or 1366x768
- **Graphics:** DirectX 10 compatible, 2GB of VRAM
- **Supported Languages on Windows 10:** English (US)
  - **Additional languages to be added in future update:** Brazilian Portuguese, Simplified Chinese, French, German, Italian, Japanese, Polish, Spanish (SP)

## Image configuration

For best results, SYSmark 25 should be installed to a clean instance of a supported operating system, with updated hardware drivers. See the [APPLICATIONS](#) section for a list of application software installed by the benchmark. SYSmark 25 includes an integrated configuration tool that will automate making changes to the system in preparation for running the benchmark. See the [SYSTEM CONFIGURATION TOOL](#) section for more information on image configuration. A list of supported meters for use with the energy consumption test can be found in the [ENERGY TEST](#) section.

- **Administrative rights:** An account with administrative privileges is required. The same account must be used to install and run SYSmark 25.
- **Configure AutoLogin** for the account used to run SYSmark 25. The benchmark will fail to run if the screen is locked and requires a password to unlock.
- **Do NOT** connect to the internet during installation
- **Set the correct system date and time** prior to installation.

## Virtualization Based Security

### Default enablement

Starting with Windows 11, new installations on compatible systems have memory integrity turned on by default. This is changing the default state of the feature in Windows, though device manufacturers and end users have the ultimate control of whether the feature is enabled.

## Hardware features for automatic enablement

Memory integrity will be turned on by default when a PC includes the following minimum hardware features:

HARDWARE FEATURES FOR AUTOMATIC ENABLEMENT	
Component	Detail
Processor	<ul style="list-style-type: none"> <li>• Intel 11th generation Core processors and newer</li> <li>• AMD Zen 2 architecture and newer</li> <li>• Qualcomm Snapdragon 8180 and newer</li> </ul>
RAM	Minimum 8GB
Storage	SSD with a minimum size of 64GB
Drivers	HVCI-compatible drivers must be installed. See <a href="#">Hypervisor-Protected Code Integrity (HVCI)</a> for more information about drivers.
BIOS	Virtualization must be enabled

## SYSmark 25 installation

**Please use disk image software to make a backup of the disk prior to installation of SYSmark 25. SYSmark 25 does not support uninstallation, therefore, BAPCo recommends making a backup of your image before installing SYSmark 25.**

Please be sure the test image is free of any known conflicting software before attempting installation. This list includes but may not be limited to any of the applications that will be installed by the benchmark. See the [APPLICATIONS](#) section for the list of applications that SYSmark 25 installs and/or uses.

Be sure that the system clock date and time are set correctly before proceeding with installation. Installation on systems with incorrect date and time settings, or modifying the time and/or date after installation may result in run time failures.

Follow these steps to install SYSmark 25:

- 1) Download SYSmark 25 from the BAPCo store
  - a. Make a backup copy of the download zip to a USB key or other external drive for safe keeping

- 2) Unpack the benchmark files
  - a. Create a folder called Sysmark25 and unpack the contents of store download.
- 3) Using Windows Explorer, navigate back to the Disc1 folder created in Step 2.
- 4) Double click on the file named SYSmark25\_setup.exe and follow the prompts to complete installation

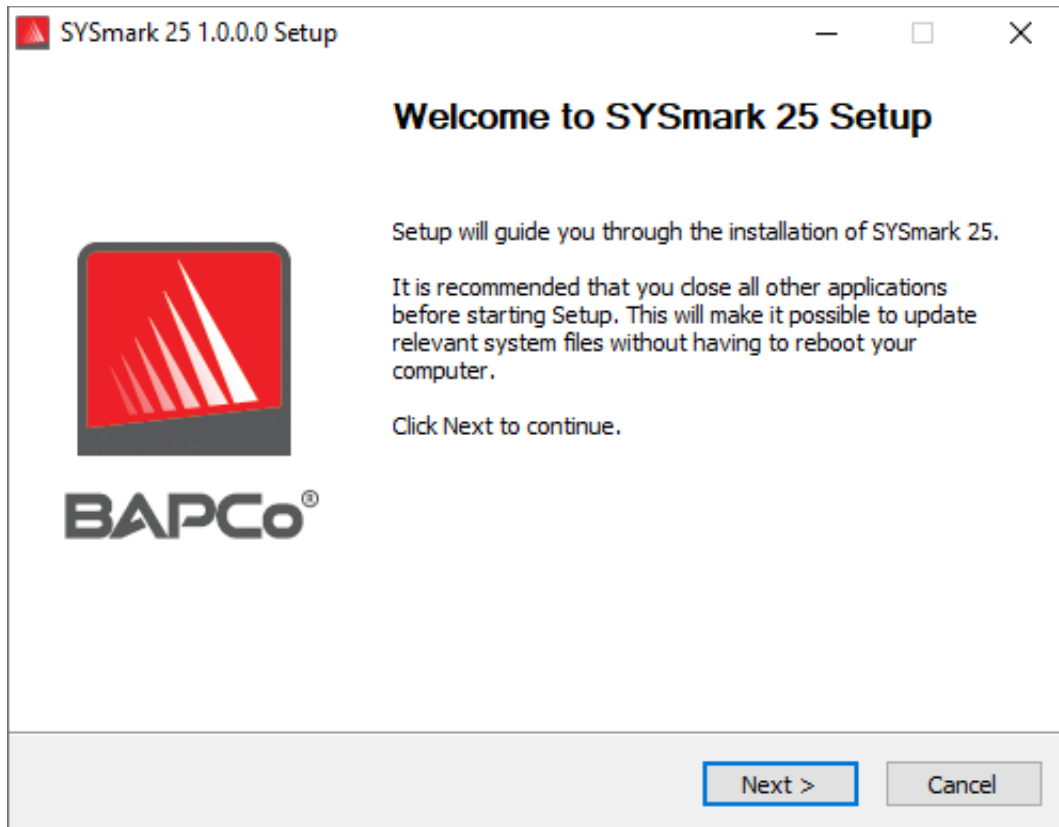


Figure 1: SYSmark 25 installer window

Read and accept BAPCo software EULA by clicking the option 'I accept the terms of the License Agreement'. Then click 'Next'

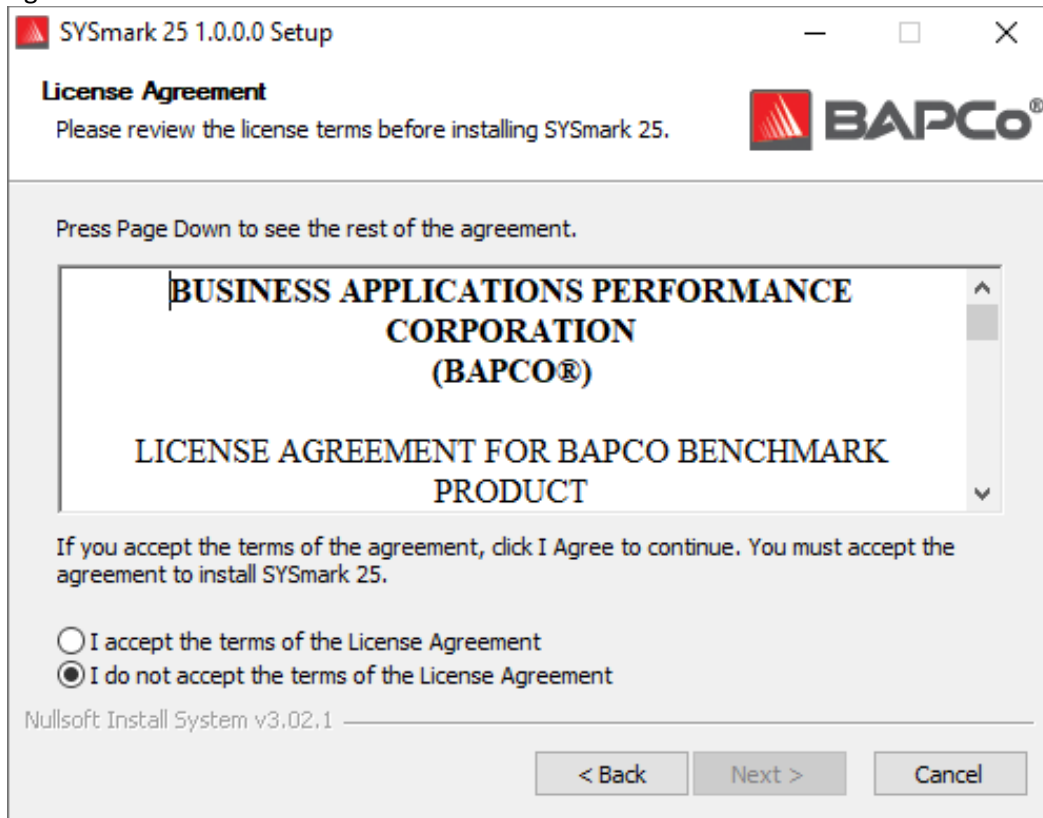
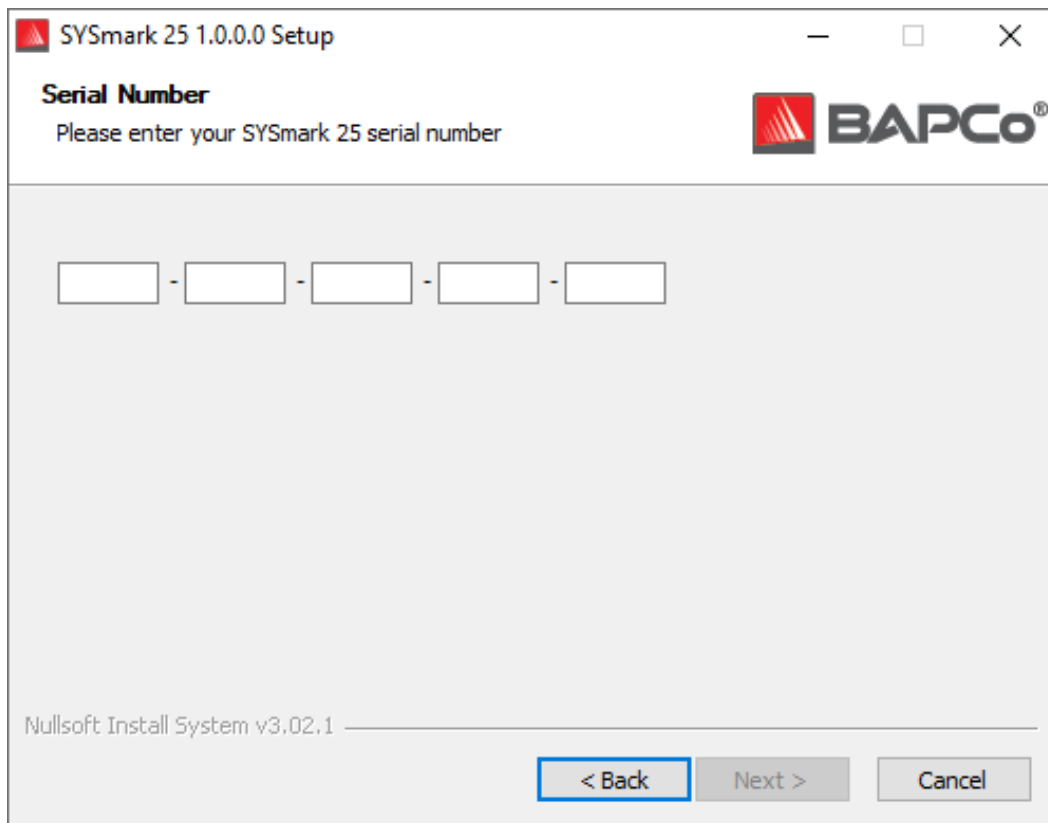


Figure 2: SYSmark 25 EULA



Enter serial number the serial number provided with benchmark package and click next to continue.



**SYSmark 25 1.0.0.0 Setup**

**Serial Number**  
Please enter your SYSmark 25 serial number

[ ] - [ ] - [ ] - [ ] - [ ]

Nullsoft Install System v3.02.1

< Back    Next >    Cancel

Figure 3 Enter a valid SYSmark 25 serial number to proceed with installation.

Figure 4 shows the default full installation of the benchmark. All core components, all scenarios and the results browser will be installed when the user clicks 'Next'

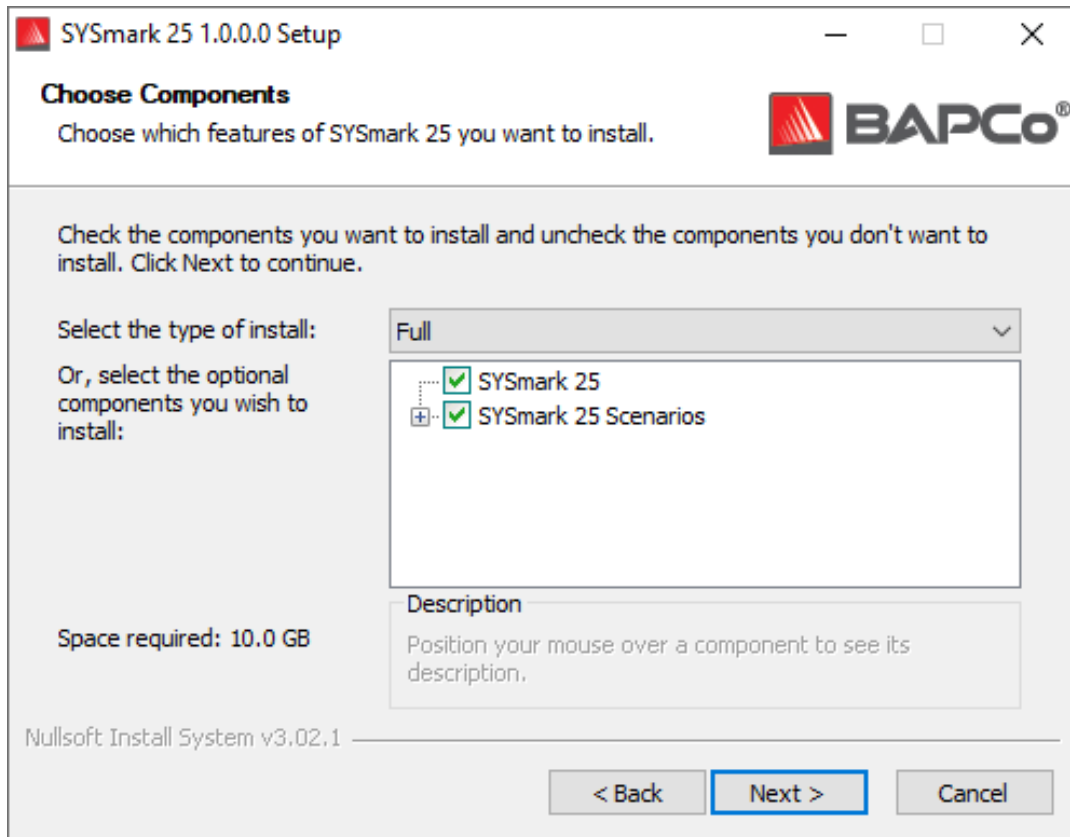


Figure 4: Default full install of SYSmark 25

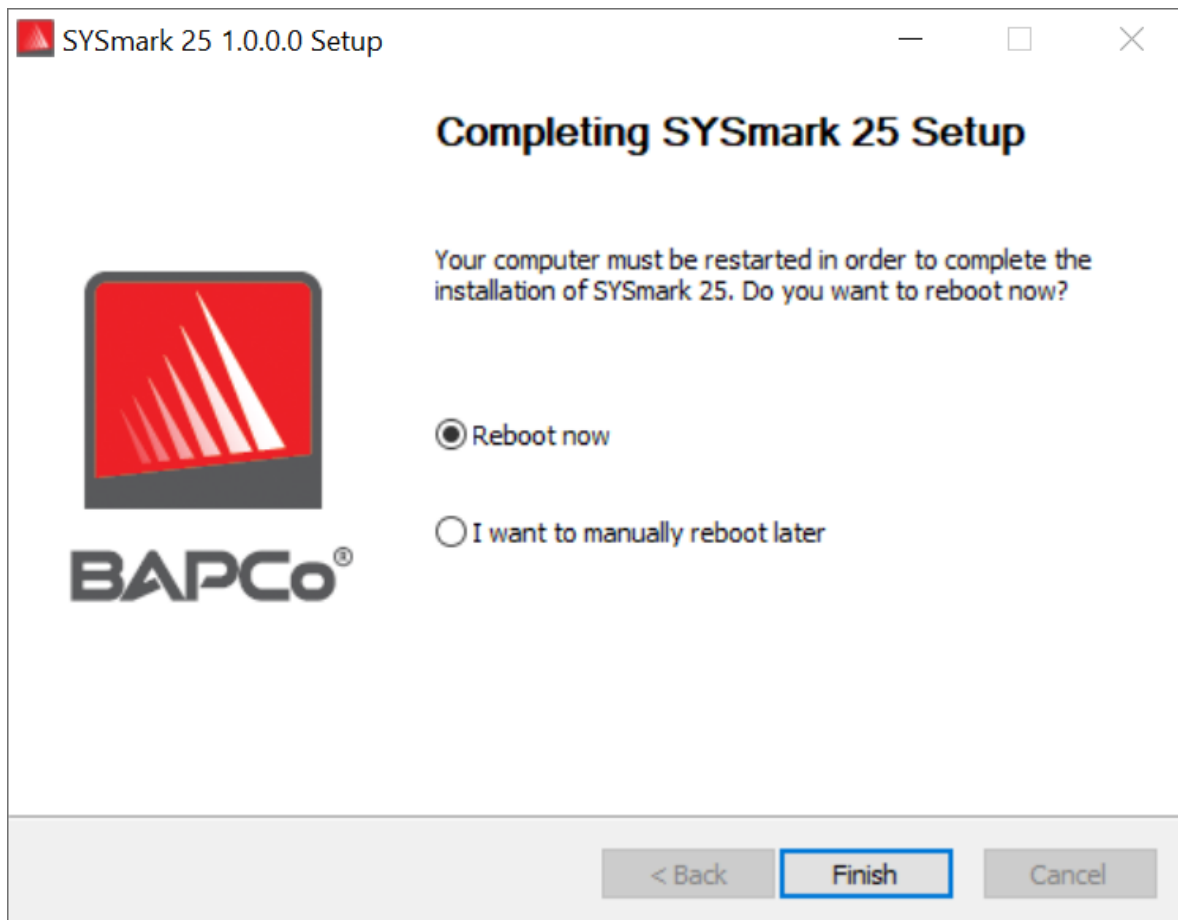


Figure 5: Installation of SYSmark 25 has completed successfully

Once installation has completed, please reboot the system before attempting to run SYSmark 25.

## Uninstallation

SYSmark 25 can be uninstalled through the Windows 10 Add/Remove programs control panel. However, due to the DRM present in some of the applications distributed with the benchmark, the system image may not fully return to its pre-installation state. BAPCo recommends customers make a backup of the system image prior to installing SYSmark 25, and restore that backup after testing has been completed..

# Running SYSmark 25

Start SYSmark 25 by double clicking the desktop short cut to launch the main interface as illustrated in Figure 6 below.

**Important:** If User Account Control has not been previously disabled, right-click the icon and choose 'Run as administrator'. UAC can then be disabled using the integrated configuration tool. More information on the integrated configuration tool is available in the [SYSTEM CONFIGURATION TOOL](#) section. SYSmark 25 must be run under the same user account that was used to install it.

Note: SYSmark 25 may also be launched via command line. See the [AUTOMATED EXECUTION](#) section for more details

## SYSmark 25 interface

SYSmark 25 includes redesigned user interface, which has been streamlined to simplify project configuration.



Figure 6: SYSmark 25 interface.

Just click 'Run Benchmark' to launch a benchmark run with default configuration which will do the following:

- Run one iteration of all three scenarios.
  - The project name will be 'project001' for the first project. Subsequent projects will be named 'project002', 'project003', and so on.
- Conditioning run will be executed, but will not be part of the performance score calculation
- Process idle tasks is set to OFF
- The system configuration tool will execute with the following options (see the [SYSTEM CONFIGURATION TOOL](#) section for additional information on these options)
  - Required items – set to ON
  - Recommended items – set to ON
  - Optional items – set to OFF
- Energy Test will be executed if a supported meter is installed and detected to the system under test.

Advanced settings can be viewed and modified by clicking the gear icon in the bottom right corner of the main user interface. See the [BENCHMARK SETTINGS](#) section for more information.

# Benchmark settings

Users can access additional benchmark settings by clicking the settings button as indicated by the red arrow in Figure 7.



Figure 7: SYSmark 25 settings button

Clicking 'Settings' button as indicated by the red arrow in Figure 7 above, will bring up the detailed settings window as shown in Figure 8 below. From this window, users may change the default number of iterations, specify a project name, disable the conditioning run, disable the energy test, and make changes to the configuration tool options. See the next section, [SYSTEM CONFIGURATION TOOL](#), for more information.

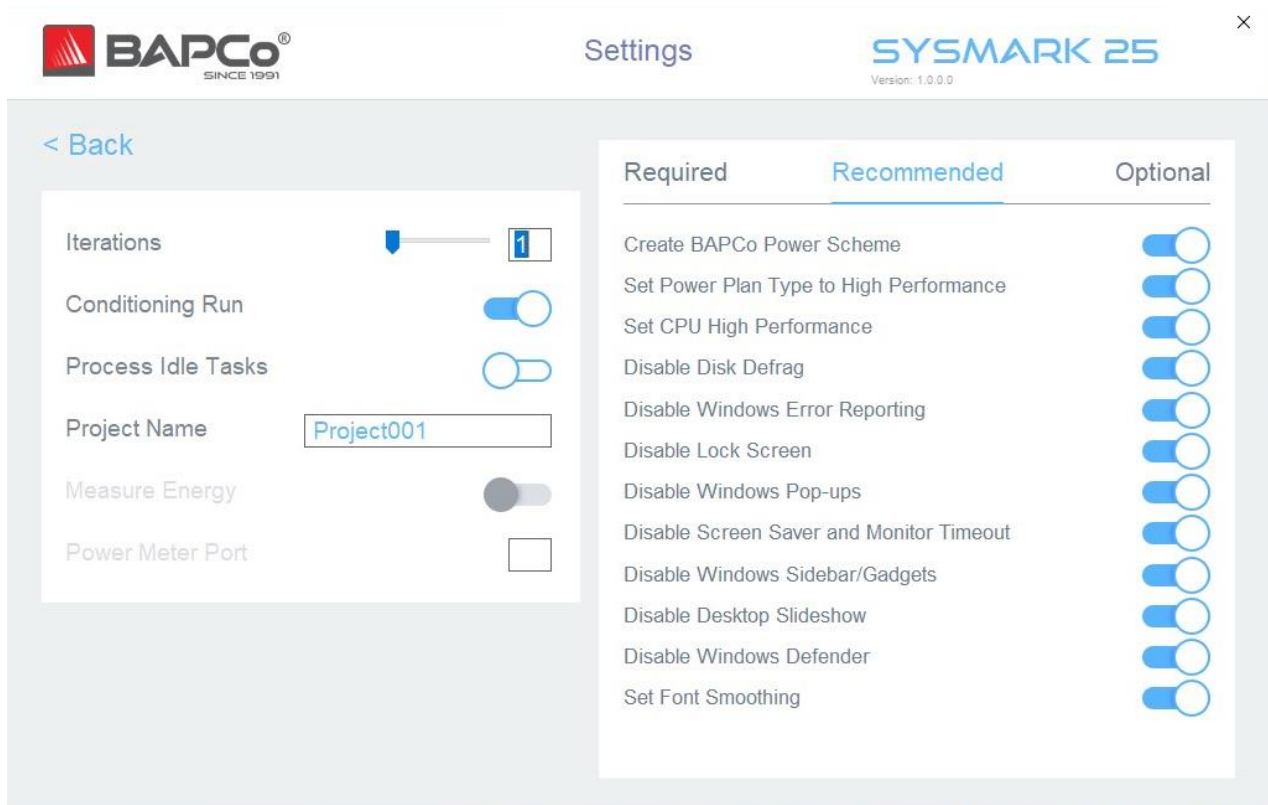


Figure 8: SYSmark 25 configuration options on Windows 10

## System Configuration Tool

The configuration tool runs automatically at the start of each test and records the state each item on the system under test prior to modifying it for benchmark execution.

By default, the configuration tool sets the Required and Recommended items as described below. Optional items are not set by default.

Users may modify the default items by clicking on the settings icon and navigating the Recommended or Optional configuration tabs. Note that Required settings cannot be disabled via the GUI.

If additional control of the system configuration items is required, please refer to the section: [SYSTEM CONFIGURATION FROM COMMAND LINE](#).

The following is a list of configuration options with their priorities that can be applied using the System Configuration tool. Some items may apply only to certain supported operating systems, as noted in the item's description. An example command line string for each configuration item is also included in the description.

## Required

Make configuration changes that are required for the benchmark to run. These items are enabled by default, and cannot be disabled.

### **Disable User Account Control (UAC)**

Disables User Account Control to prevent Administrator elevation prompts from appearing during benchmark runs. The system must be rebooted to apply this change.

### **Set DPI scaling to 100%**

Sets the desktop scaling to 100%. Prevents failures on higher resolution displays

### **Disable Low Battery Actions**

Prevents the system from shutting down or from posting a warning when the battery reaches the low level.

### **Disable Network Proxies**

Disables proxy server configuration for Internet connection settings.

### **Disable System Sleep and Hibernate**

Prevents the system from going to sleep or hibernating and disables the "Require password on wake" setting.

### **Disable Windows Update**

Disables the windows update service.

### **Disable WinSAT service**

Disables the WinSAT service

## Recommended

Make configuration changes that are recommended in order to obtain repeatable scores, and minimize the occurrence of errors. Recommended items are enabled by default. Recommended items may be disabled by clicking the slider next to the configuration item, or using the command line option.

### **Create BAPCo Power Scheme**

Creates a new power scheme named "BAPCo SYSmark 25" based on the system's currently active power scheme. If applied, all subsequent power profile configuration changes will be applied to



the newly created power scheme. If this option is not enabled, all power profile configuration changes will be applied to the currently active power scheme.

```
"C:\Program Files (x86)\BAPCo\Sysmark25\bin\SYSmark 25.exe" -p=test_project -sc= PowerScheme= on|off
```

### **Set Power Plan Type to "High Performance"**

Sets the "Power Plan Type" option (sometimes referred to as "Power Plan Personality") of the active power scheme to "High Performance". This setting tags the active power plan with an overall personality that favors performance over energy savings. Drivers and applications may query this setting to determine their respective performance vs energy savings behavior. This option may be used whether or not the "Create BAPCo Power Scheme" option is checked. If "Create BAPCo Power Scheme" is not enabled, "Set Power Plan Type" will be applied to the currently active power scheme.

```
"C:\Program Files (x86)\BAPCo\Sysmark25\bin\SYSmark 25.exe" -p=test_project -sc= PowerPlan= on|off
```

### **Set CPU High Performance**

Sets the minimum and maximum value for CPU performance state to 100% to prevent CPU throttling on both AC and DC power.

```
"C:\Program Files (x86)\BAPCo\Sysmark25\bin\SYSmark 25.exe" -p=test_project -sc= HighPerformance= on|off
```

### **Disable Disk Defrag**

Disables the Defrag scheduled task.

```
"C:\Program Files (x86)\BAPCo\Sysmark25\bin\SYSmark 25.exe" -p=test_project -sc= DiskDefrag= on|off
```

### **Disable Windows Error reporting**

Prevents Windows Error reporting tool from presenting error reporting windows.

```
"C:\Program Files (x86)\BAPCo\Sysmark25\bin\SYSmark 25.exe" -p=test_project -sc= ErrorReporting= on|off
```

### **Disable Windows Lock screen**

Disables the lock screen to prevent it from blocking application input

```
"C:\Program Files (x86)\BAPCo\Sysmark25\bin\SYSmark 25.exe" -p=test_project -sc= DisableLockScreen= on|off
```

### **Disable Windows Pop-ups**

Disables all pop up notifications (Balloon tips) in the systray.

```
"C:\Program Files (x86)\BAPCo\Sysmark25\bin\SYSmark 25.exe" -p=test_project -sc= DisablePopUps= on|off
```

### **Disable Screen Saver and Monitor Timeout**

Turns off the screen saver. Disables display timeout in the power profile for both AC and DC options

```
"C:\Program Files (x86)\BAPCo\Sysmark25\bin\SYSmark 25.exe" -p=test_project -sc= SystemSleep= on|off
```

### **Disable Windows Sidebar/Gadgets**

Turns off Gadgets.

```
"C:\Program Files (x86)\BAPCo\Sysmark25\bin\SYSmark 25.exe" -p=test_project -sc= WindowsSideBar= on|off
```

### **Disable Desktop Slide Show**

Prevents the desktop background from changing.

```
"C:\Program Files (x86)\BAPCo\Sysmark25\bin\SYSmark 25.exe" -p=test_project -sc= DesktopSlideShow= on|off
```

### **Disable Windows Security Center**

Disables Windows Defender Antivirus and Windows Security Center services. This option does not apply to Windows 11.

```
"C:\Program Files (x86)\BAPCo\Sysmark25\bin\SYSmark 25.exe" -p=test_project -sc= WindowsSecurityCenter= on|off
```

### **Disable Windows Firewall**

Configures the Windows firewall to allow all inbound/outbound traffic on Windows 10.

```
"C:\Program Files (x86)\BAPCo\Sysmark25\bin\SYSmark 25.exe" -p=test_project -sc= DisableWindowsFirewall= on|off
```

### **Set Font Smoothing**

Turns on Windows font smoothing

```
"C:\Program Files (x86)\BAPCo\Sysmark25\bin\SYSmark 25.exe" -p=test_project -sc= SetFontSmoothing= on|off
```

## **Optional**

Make configuration changes that are typically not needed to obtain repeatable scores, but which may be needed in some rare cases. Optional items are not enabled by default.

### **Disable Hard Disk Timeout**

Prevents the hard disk from going to sleep

```
"C:\Program Files (x86)\BAPCo\Sysmark25\bin\SYSmark 25.exe" -p=test_project -sc= HardDiskTimeout= on|off
```

### **Disable System Restore**

Disables Windows system restore

```
"C:\Program Files (x86)\BAPCo\Sysmark25\bin\SYSmark 25.exe" -p=test_project -sc= SystemRestore= on|off
```

### **Ignore Laptop Lid Close**

Prevents the system from going to sleep if the lid is closed during a benchmark run

```
"C:\Program Files (x86)\BAPCo\Sysmark25\bin\SYSmark 25.exe" -p=test_project -sc= LaptopLidClose= on|off
```

### **Enable Dark Mode**

Enables Dark Mode on systems which support it. This setting will be reported in the results as 'On', if all dark mode settings are enabled, 'Off' if all dark mode settings are disabled, or 'Custom' if the system has been configured with a combination of dark mode settings.

```
"C:\Program Files (x86)\BAPCo\Sysmark25\bin\SYSmark 25.exe" -p=test_project -sc= EnableDarkMode= on|off
```

### **No Wait Between OpenMP threads**

Sets OpenMP KMP\_BLOCKTIME variable to '0'. This variable specifies the number of milliseconds that the OpenMP based programs should wait after completing the execution of a parallel region before putting threads to sleep.

```
"C:\Program Files (x86)\BAPCo\Sysmark25\bin\SYSmark 25.exe" -p=test_project -sc= ZeroKMPBlockTime= on|off
```

## **System configuration from command line**

When running SYSmark 25 from the command line, the system configuration items will be set according to their defaults unless the user specifies options on the command line. Example parameters for individual settings are provided in the description for each item in the previous section.

Example:

```
"C:\Program Files (x86)\BAPCo\Sysmark25\bin\SYSmark 25.exe" -p=test_project -sc= WindowsSecurityCenter= Off
```

The above command will execute the benchmark in a project called 'test\_project', run the defaults of one iteration plus the conditioning run. The WindowsSecurityCenter option in the configuration tool will be set to 'Off' meaning the Windows Security Center service will not be disabled during the test.

For cases where users do not want to set any system configuration items, all of the system configuration items must be specified as set to 'Off' on the command line. Configuration items listed as Required cannot be disabled, and therefore do not have a corresponding command line parameter.

## Results generation and display

The SYSmark 25 user interface will display the results of the most recently run project in the main benchmark windows. If SYSmark 25 has been launched after a new installation, no results will appear until a run has been successful completed.

### **Viewing additional results**

SYSmark 25 results are saved as a PDF document in the Results folder located on the desktop of the system under test. Use Microsoft Edge browser in order to view the contents of the PDF on the system under test. Each PDF file also includes an embedded .XML attachment which contains additional details about the system under test. A standalone PDF reader such as Adobe Acrobat or Foxit PDF must be used to view the XML, as PDF attachments are not currently supported by Chrome's PDF viewer.

# Results submission

Users may submit results in the following ways:

## Submit from SYSmark 25

- Click the 'Submit Results' button on the SYSmark 25 main window to submit the most recent FDR.
- Fill in the submission form dialog and click submit.
- Note: If no results are displayed in the main window, no information will be sent to BAPCo.

## Submit results by web browser

PDF results files may also be submitted through the web browser via drag and drop at [results.bapco.com/upload](https://results.bapco.com/upload). To upload results by drag and drop do the following steps:

- Locate the PDF files to be submitted
- Navigate to [results.bapco.com](https://results.bapco.com) and click the 'Submit results' option in the menu on the left of the web page
- Complete the information (Name, company, email address, and configuration notes, if desired).
- Drag and drop the files on to the page, or click 'Add files' and browse to the folder containing the PDFs for upload. Click 'Start upload'.
- An email will be sent to the provided email address with a link to view the status of the submission. Results will take up to 10 days to be publicly viewable.

# Automated installation

SYSmark 25 may be installed through the command line. The following command line switches are available:

- /S - silent install, no GUI
- /SN <serialnumber>, pass serial number to the installer

To install SYSmark 25 from the command line, open a command prompt, change to the directory where the SYSmark25\_Setup.exe file is located and issue the following command, replacing <1234-5678-9123-4567-8912-34567> with the 25 digit serial number provided at time of purchase.

Example command for unattended installation

```
C:\>start /wait SYSmark25_Setup.exe /S /SN= <1234-5678-9123-4567-8912-34567>
```

## Installer exit codes

When complete, the installer will return an exit code (stored in %ERRORLEVEL%). See below for the exit codes and their meanings:

- 0 - Success
- 3010 - Success, reboot required
- 1 - Installation abort by user
- 2 - General installation problem
- 3 - Missing or invalid serial number
- 4 - The following applications must be uninstalled before installing SYSmark 25
- 5 - SYSmark 25 (64-bit) can only be installed on 64-bit machines
- 6 - SYSmark 25 installer is already running
- 7 - Installer must be run from the top level installer: SYSmark25\_Setup.exe
- 8 - Disc 2 version does not match the version in Disc 1
- 9 - Application installation missing. Invalid installation. Please uninstall and reinstall SYSmark 25
- 10 - Installation directory must be less than 145 characters.
- 11 - Installer cannot find Disc2 media (or folder)

# Automated execution

SYSmark 25 also supports execution from the command line. Supported command line parameters are provided in the list below. The SYSmark 25 GUI will launch if there are syntax errors in the command line text.

-p= or --project	Specifies the name of the project. This option determines if the GUI is presented to the user, or if the benchmark runs silently. If this option is supplied, it is assumed that the GUI should not appear.
-i or --iterations	Specifies the number of iterations to run. This must be greater than 0. The default is 1.
-r or --retries	Specifies the number of retries when a script error occurs. The default is 5.
-w or --retrywait	Specifies the amount of time in seconds to wait before a retry. The default is 120 seconds.
-j or --energytest	Enables energy testing
-nc or --noconditioning	Turns off system conditioning run.
-ep or processIdleTask --	Turns on process idle tasks.
-h or --help	Displays the help screen.
-drsc or disablerestoresc --	Disables restore of system configuration values at the end of the benchmark run.
-s or --shutdown	Shutdown the system at the end of benchmark run.
-sc or --system config = <str>	Enables or disables system config tool options on the command line (see section <a href="#">SYSTEM CONFIGURATION FROM COMMAND LINE</a> for more information)

The example command below will launch SYSmark 25 with the default system configuration items, create a project called 'test\_project' and run the benchmark four times.

```
"C:\Program Files (x86)\BAPCo\Sysmark25\bin\SYSmark 25.exe" -p=test_project -i 4"
```

## Automated data collection

SYSmark 25's workload manager allows the user to execute scripts to aid in the processing of results at the conclusion of a run. Placeholder scripts are included with each installation in the C:\Program Files (x86)\BAPCo\Sysmark25\Automation\ directory.

ProcessResults.bat is executed at the conclusion of a successful run of SYSmark 25. Users can add commands to this script to copy results to a new location, or call additional commands specific to their environment.

ProcessError.bat is executed if SYSmark 25 exits with an error condition. Insert commands to this script to do things such as copying error logs to a new location, or call other commands for post processing errors.



# Energy Test

## Yokogawa WT310E Meter configuration

1. Obtain WT310E series power meter
2. Make all power connections
3. Power up the system under test and install YKMUSB drivers  
<https://tmi.yokogawa.com/us/library/documents-downloads/software/usb-driver/>
4. Connect USB cable from WT310E to system under test
5. SYSmark 25 can now be executed with the 'Energy Test' option enabled.

## Watts up? Meter configuration

1. Obtain a compatible Watts up? power meter
  - Contact [support@bapco.com](mailto:support@bapco.com) for available meter options
  - Compatible meters include the PRO, PRO ES, and .NET models
  - The basic "Watts up?" model is not compatible.
  - Compatible Watts up? models support 120V, 60 Hz power and are unfortunately not suitable for Europe (230 VAC 50 Hz)
2. Make all power connections
  - Plug the Watts up? meter into a power outlet
  - Plug the system under test into the power outlet on the Watts up? meter
3. Power up the system under test and install Watts up? data logger found here:
  - Download the data logger package: [https://bapco.com/wp-content/uploads/ftp\\_uploads/WuUSBSetup9.zip](https://bapco.com/wp-content/uploads/ftp_uploads/WuUSBSetup9.zip)
  - Unzip the package, double click WuUSBSetup.exe, and step through the installation wizard
  - If the following warning appears during installation of the Data logger, click 'Ok' to dismiss

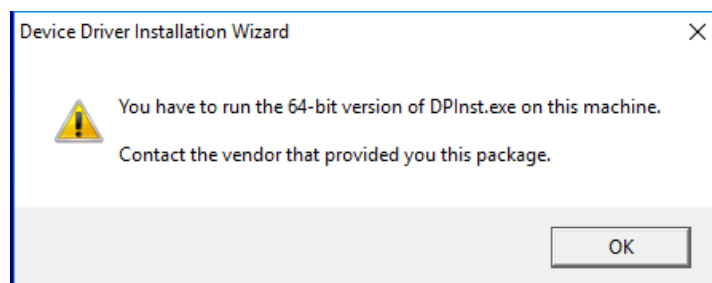


Figure 9: Watts Up Pro warning

- Uncheck the option to 'Run Watts Up USB now and click 'Finish' to complete installation of the data logger
4. Install the USB controller driver
    - Be sure the Watts Up Pro meter is connected to the test system

- Download the USB controller driver: [https://bapco.com/wp-content/uploads/ftp\\_uploads/CDM2.04.06WHQL\\_Certified.zip](https://bapco.com/wp-content/uploads/ftp_uploads/CDM2.04.06WHQL_Certified.zip)
- Extract the contents of the zip file to a folder.
- Open Device Manager and under 'Other devices' locate the USB UART entry as shown

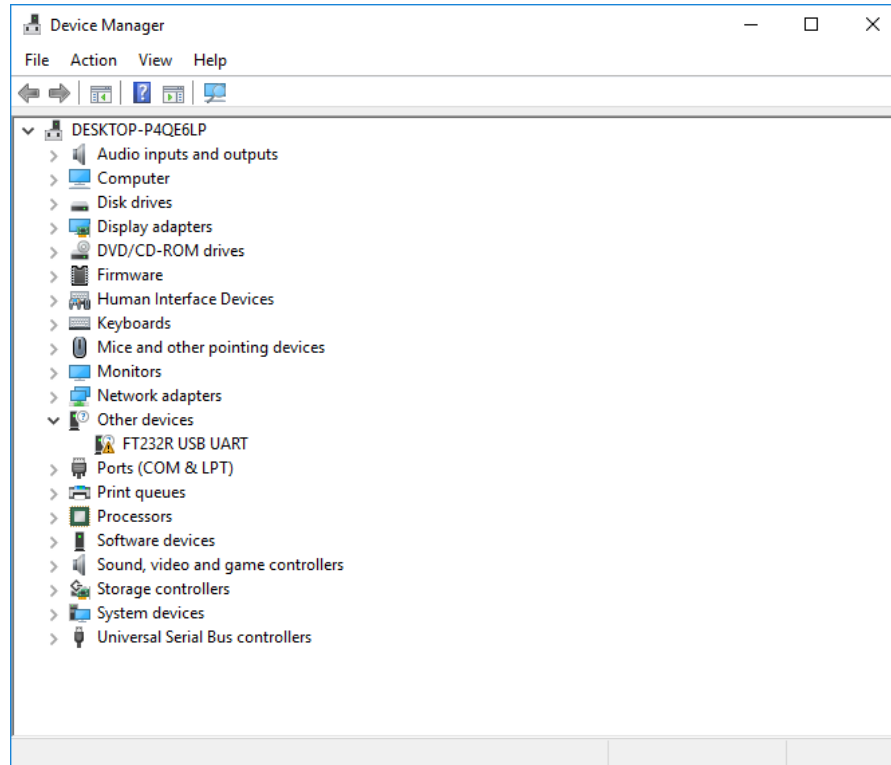


Figure 10: Device manager driver not found

- Right click the and choose 'Update driver software'
- Choose 'Browse my computer for driver software'
- Check the box for 'include subfolders', then use 'Browse' to navigate to the location where the driver package was extracted. Click 'Next' and Windows will scan the folder and install drivers
- After 'USB serial controller' is installed, return to device manager and repeat the steps for the 'USB serial port' item
- Device manager should now be clear of any driver not found warnings
- SYSmark 25 can now be executed with the 'Energy Test' option enabled.

## Tips For Usage

This subsection describes the behavior of SYSmark 25 during the execution of a benchmark run.

### Best Practices

In order to obtain reliable, reproducible results, BAPCo recommends using the default settings in the SYSmark 25 interface. To run with the default settings, just launch SYSmark 25 and click 'Run Benchmark'. The default settings are listed below.

- Iterations (one iteration)
- Conditioning run enabled
- Process idle tasks disabled
- Enable Energy test (applies only if a supported meter is installed and connected to the system under test).
- When using BAPCo benchmarks to evaluate performance or battery life, one should install the latest production drivers from the hardware manufacturer. Drivers included with the operating system may not be device specific or newer drivers may be available from the device manufacturer. Using incorrect drivers could result in significantly reduced performance

### Heads Up Display (HUD)

The Heads Up Display appears in the upper right corner of the desktop and provides information about the currently running project



Figure 11: SYSmark 25 HUD.

### Process idle tasks

Prior to executing benchmark workloads, the SYSmark 25 workload manager will pause for 120 seconds to allow the system to stabilize. When the 120 seconds have elapsed, the workload manager will issue the process idle tasks command, if this option was selected. When the idle tasks queue is cleared, the benchmark workload will begin. Note: Process idle tasks completion time can vary from system to system.

### Keyboard/mouse input blocking

Once workload execution begins, the workload manager will lock the system to prevent accidental input from the mouse or keyboard from disrupting the workload automation. The workload manager will continue to execute the selected scenarios for the current project, and will display the results at the successful conclusion of the run. Refer to the [STOPPING A RUN IN PROGRESS](#) section below for additional information on keyboard and mouse input blocking.

## Error handling

By default, when SYSmark 25 encounters an error during the execution of a project, the workload manager will log the error and then present the user with the retry dialog, as pictured below.

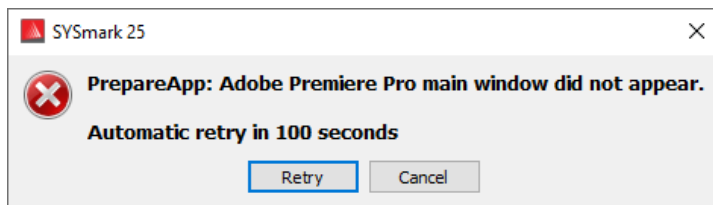


Figure 12: SYSmark 25 retry dialog

Unless otherwise configured on the command line with `-r` or `--retries`, SYSmark 25 will attempt to retry a scenario up to five times. The default timeout between an error and scenario retry is 120 seconds. This value can be changed on the command line using `-r` or `--retrywait`. If the scenario cannot be successfully completed before the retry threshold is reached, the workload manager will halt execution and display the error message in the results browser.

SYSmark 25 allows further control of error handling timeouts through the `BENCHMARK_TIMEOUT_MULT` environment variable. This variable can be configured to increase the amount of time a benchmark script waits before throwing an error and either attempting a retry or halting the run. The default value for `BENCHMARK_TIMEOUT_MULT` is 1.0. Increasing the value to 2.0 doubles the error handling timeout, 3.0 triples the timeout, and so on.

## Stopping a run in progress

If it becomes necessary to stop a benchmark run in progress, follow these steps:

- Press the CTRL-ALT-DEL keys at the same time, in order to bring up the Windows change password screen
- Click 'Cancel' to return to the desktop
- Keyboard and mouse input should now be enabled
- Navigate to the systray in the lower right corner of the screen and find the BAPCo icon, as shown below

- Right click the icon and choose 'Stop'



*Figure 13: BAPCo systray icon. The green triangle indicates SYSmark 25 is running*

## Reference system

SYSmark 25 performance scores are normalized using a reference system. The reference system scores '1000' on each of the three scenarios, and on the overall SYSmark 25 performance rating. The reference system configuration is listed below.

### Lenovo® ThinkCentre™ M720q

- Processor: Intel® Core™ i5-8500T @ 2.10 GHz
- Operating System: Microsoft Windows 10 Pro x64 19H2 (10.0.0.1863.418)
- RAM: 1x8GB DDR4 single channel
- Graphics: Intel® HD Graphics 630
- Resolution: 1920x1080
- Audio: Integrated High Definition Audio
- Storage: 256GB NVMe SSD
- Networking: Integrated Gigabit Ethernet

# Applications

The following applications (grouped by scenario) are installed and/or used by SYSmark 25. Some applications appear in multiple scenarios, but only one instance of the application is installed.

## Productivity

- Adobe® Acrobat® Pro DC
- Audacity 2.3.2 installer
- AutoIT 3.3.15.2
- Corel WinZip 24 Enterprise
- Google Chrome™
- Microsoft® Excel® 2019 Professional Plus VL
- Microsoft® Outlook® 2019 Professional Plus VL
- Microsoft® PowerPoint® 2019 Professional Plus VL
- Microsoft® Word® 2019 Professional Plus VL
- Shotcut v19.09.14

## Creativity

- Adobe® Lightroom® Classic CC 2019
- Adobe® Premiere® Pro CC 2019 v20.0.6
- Adobe® Photoshop® CC 2019 v13.1.5

## Responsiveness\*

- Adobe® Acrobat® Pro DC
- Adobe® Lightroom® Classic CC 2019
- Adobe® Premiere® Pro CC 2019
- Adobe® Photoshop® CC 2019
- Google Chrome™
- Microsoft® Excel® 2019 Professional Plus VL
- Microsoft® Outlook® 2019 Professional Plus VL
- Microsoft® PowerPoint® 2019 Professional Plus VL
- Microsoft® Word® 2019 Professional Plus VL

Please note some of these applications have licensing restrictions which cause them to expire after 30 days requiring restoring device under test from backup and then installing new instance of SYSmark25.

\*The Responsiveness scenario is a combination of operations taken from the Productivity and Creativity scenarios.

# Scenarios

SYSmark 25 scenarios and workload descriptions are provided below.

## **Productivity**

The Productivity scenario models office environment like usage including word processing (mail merge, document comparison, and PDF conversion), spreadsheet data manipulation (data modeling, financial forecasting), web browsing, email, presentation editing, software development (code compilation), application installation, and archiving files.

## **Creativity**

The Creativity scenario models editing digital photos (applying filters and creating HDR photos), cataloging digital photos (organizing catalog, use of facial detection to group people), and editing digital video (create a timeline from various source clips and transcoding the output).

## **Responsiveness**

The Responsiveness scenario is a combination of operations taken from the Productivity and Creativity scenarios. Such operations include application opens, file opens, file saves, and more. Please refer to the SYSmark 25 Whitepaper for more information on the SYSmark 25 scoring methodology.



# Support

Technical support for SYSmark 25 is provided on the web at <https://bapco.com/support> and via email at [support@bapco.com](mailto:support@bapco.com). Before contacting support, please be sure all updates for SYSmark 25 have been installed. BAPCo does not provide support for down-level versions. When contacting support please include the following information.

- SYSmark 25 version, e.g., 1.0.0.123
- System configuration information
- Step by step instructions for reproducing the problem
- Rate of error, e.g., 100%, 50%
- Archive of the benchmark error logs from the failing run
  - Locate the installation folder, for example: C:\Program Files (x86)\BAPCo\Sysmark25\Config
    - Copy the SYSmark25.db file
  - If reporting a problem with installation, locate the benchmark installation logs:
    - %TEMP%\Sysmark25\_Disc1.log
  - Archive the database file and the logs listed above using WinZip, WinRAR, etc.
  - Attach the archive file to the support request email sent to BAPCo support, or please upload the archive file through the form at <https://bapco.com/support>
  - When reporting multiple errors, please include a description for each problem being reported

# SYSmark® 25 Benchmarking Rules v1.3

This document describes the rules governing publication of results derived from running the BAPCo SYSmark 25 benchmark. Any licensee who wishes to publish such results is obliged to adhere to all rules and regulations described in this document or other documents provided by BAPCo related to execution and reporting of SYSmark 25 benchmark results. BAPCo reserves the right to change the rules outlined in this document at any time. Licensees are encouraged to consult BAPCo website at [www.bapco.com](http://www.bapco.com) for the latest information regarding execution and publication rules. For more information please consult the Software License Agreement.

## Benchmark Execution

**Workload Manager:** All benchmarks must be run using the SYSmark 25 Workload Manager. This utility is an executable program that runs the SYSmark 25 benchmark. It also includes a module that generates the final benchmark results for the system under test. All published results must be derived only from a complete and correct run of the benchmark. All tests must be performed without modification to any part of the SYSmark 25 software.

The collective set of hardware and software used in generation of an official SYSmark 25 result must be available to the public as defined by BAPCo's availability criteria. The following specific rules apply:

**Operating System:** The operating system used to generate and publish results must be a publicly available release from the original software vendor. Consult the product manual at [www.bapco.com](http://www.bapco.com) for the current list of supported operating systems. Upgrade of specific drivers that are released and maintained by vendors other than the operating system vendor (e.g. graphics drivers, disk drivers, motherboard setting files, multimedia drivers) is allowed provided these drivers are publicly available, release-quality drivers from original vendors of such drivers. Licensees may also use operating system service packs, API updates (e.g. Direct X) and other such updates provided they are publicly available, release-quality software from the original vendor, and that they meet the benchmark's Operating System requirements. Licensees should also consult license agreements from individual software vendors to ensure compliance with vendor benchmark restrictions.

**Performance Enhancing Utilities:** Use of performance enhancing utilities or techniques is allowed provided that the utility or technique is publicly available, release-quality software from the original vendor. The utility needs to be documented and such techniques should not compromise the integrity of the system under test or the benchmark. BAPCo shall reserve the right to review the usage of such tools or techniques and invalidate published results if need be.

**Hardware:** The system hardware used to generate official SYSmark 25 results must be publicly available at the time of publication or within 60 days thereafter. The system must be purchasable as a complete platform from an Original Equipment Manufacturer within 60 days of publication. Alternatively, licensees

may report results for systems which may not be available from an OEM but whose individual components are publicly available and purchasable from various vendors at the time of publication or within 60 days thereafter. Note that the 60-day grace period does not apply to system software. All software used must be publicly available and be of release-quality available from the original software vendor.

### **Full Disclosure Report**

A complete Full Disclosure Report (FDR), must be generated by the Workload Manager for all published results. This FDR must include the overall SYSmark 25 Rating, the ratings for each of the three scenarios as well as pertinent system information about the state of the system under test. The format and the information included in this report is determined by BAPCo. No modifications should be made to the FDR (modifications to the FDR will invalidate the FDR).

### **Publication**

BAPCo requires all licensees to submit FDRs to the BAPCo website (<https://results.bapco.com>) for all publicly available published results. Results may be submitted by any of the following methods:

- 1) Clicking the 'submit results' button from inside the benchmark GUI after a completed run
- 2) Uploading results via the online submission form at <https://results.bapco.com>

Or, if the above options are unavailable

- 3) Results may be submitted by email to [report@bapco.com](mailto:report@bapco.com)

Licensees are responsible for retaining FDR records for all published results. Results submitted by email will also be published at [results.bapco.com](https://results.bapco.com).

All FDRs submitted by licensees to BAPCo are subject to a 10 day review period. During this review period any BAPCo member can challenge the submitted FDR or submit a counter FDR. When a challenge occurs or a counter FDR is submitted, BAPCo will decide which, if any, of the FDRs will be accepted for inclusion in the FDR database.

Any publication of results must be accompanied by at least the system model number plus any discrepancies between the shipping configuration of that system model and the configuration of the system model actually tested.

Results collected on systems that do not meet the minimum system requirements for running SYSmark 25 may be published if submitted to BAPCo for inclusion in the FDR database. However, BAPCo will only offer technical support for system configurations that meet or exceed the minimum system requirements for SYSmark 25.

Any publication of SYSmark 25 results must include the SYSmark 25 overall score from the same run of the benchmark.

Any publication of SYSmark 25 results must include a link to the online results database where the claim has been submitted.

## **Relative Performance**

Licensees have the option of publishing the relative performance of two or more systems (for example, “System X is 15% faster than System Y using SYSmark 25”) as long as the licensee adheres to the Benchmark Execution and Publication rules above for all systems.

If a licensee publishes the relative performance of two or more systems and one or more of those systems does not adhere to the Benchmark Execution and Publication rules above, the licensee must state that the performance results are “estimated” or “projected” when making the claim (for example, “We estimate that System X is 15% faster than System Y using SYSmark 25”). Publishing absolute scores of estimated or projected results is not permitted.

## **Availability**

When publishing SYSmark 25 results, the tested system must be available for purchase by the public either at the time of publication or within 60 days after publication. Note that the 60-day grace period does not apply to system software. All software used must be release-quality and made publicly available from the original software vendor.

## **FDR Processing**

The submitted FDRs are processed by BAPCo and classified as:

*Released for publication* - The results are released for publication as filed.

*Rejected* - The results are rejected for publication as filed.

The Released for publication classification is in no way a validation or an endorsement of the results by BAPCo. Licensees are free to publish results as long as a complete and valid FDR has been generated and submitted to results.bapco.com. BAPCo will perform frequent audits of the submitted FDRs and reserves the right to revoke the license granted to licensees who have not adhered to the regulations described in this or other SYSmark 25 documentation. In the case where an FDR is returned to the licensee with rejected classification, the licensee must immediately stop publication of the rejected results until the matter is clarified by BAPCo. Any publication of results must be accompanied by at least the system model number plus any discrepancies between the configuration of the stated model number and the configuration of the system tested. The publication can use the single overall SYSmark 25 rating or the combination of the overall rating and a scenario rating. Licensees may not publish scenario ratings unless the overall SYSmark 25 rating is also included. (E.g. the Productivity scenario rating cannot be published without disclosing the SYSmark 25 overall rating) The term SYSmark is a registered trademark of the Business Applications Performance Corporation and may only be used in conjunction with performance metrics generated by the SYSmark 25 Workload Manager. Any other performance characterizations may be made but must be derived from the performance metrics generated by the Workload Manager. The terms SYSmark and SYSmark 25 may not be used as the performance metric describing such characterizations.

### **Publication of Results on Non-OEM Platforms**

BAPCo allows the publication of performance indices using SYSmark 25 for making "Non-OEM" platform comparisons. This includes performance comparisons on systems that are not shipped from an OEM as a complete platform. An example of such comparisons is when a graphics card manufacturer wishes to compare the performance of its graphics card to that of another manufacturer in an identical platform by swapping the cards and measuring the performance. Results published on Non-OEM platforms must be marked as Modified on the accompanying FDR and whenever appearing in publications of any kind.