

BAPCo Benchmark Configuration Guide for Non-English Operating Systems

Non English Operating Systems Installation Procedure for Microsoft Windows

This document describes the steps for configuring non-English versions of Microsoft Windows for using with BAPCo benchmarks such as SYSmark 2014 and MobileMark 2014. The example screenshots were taken on a system with Windows 10 installed, although other Windows operating system versions are supported as well (see list below).

Supported Windows versions

- Windows 7 SP1
- Windows 8.1
- Windows 10
- Windows 10 TH2

Supported Languages

- Chinese
- French
- German
- Japanese
- Portuguese (Brazilian)
- Russian
- Spanish

Configuration of non-English Global Language settings

For best results, please configure the target system to English language settings prior to installing either SYSmark or MobileMark.

Step 1 – Open Control Panel

Click the “Clock, Language, and Region” item (as shown in Figure 1).

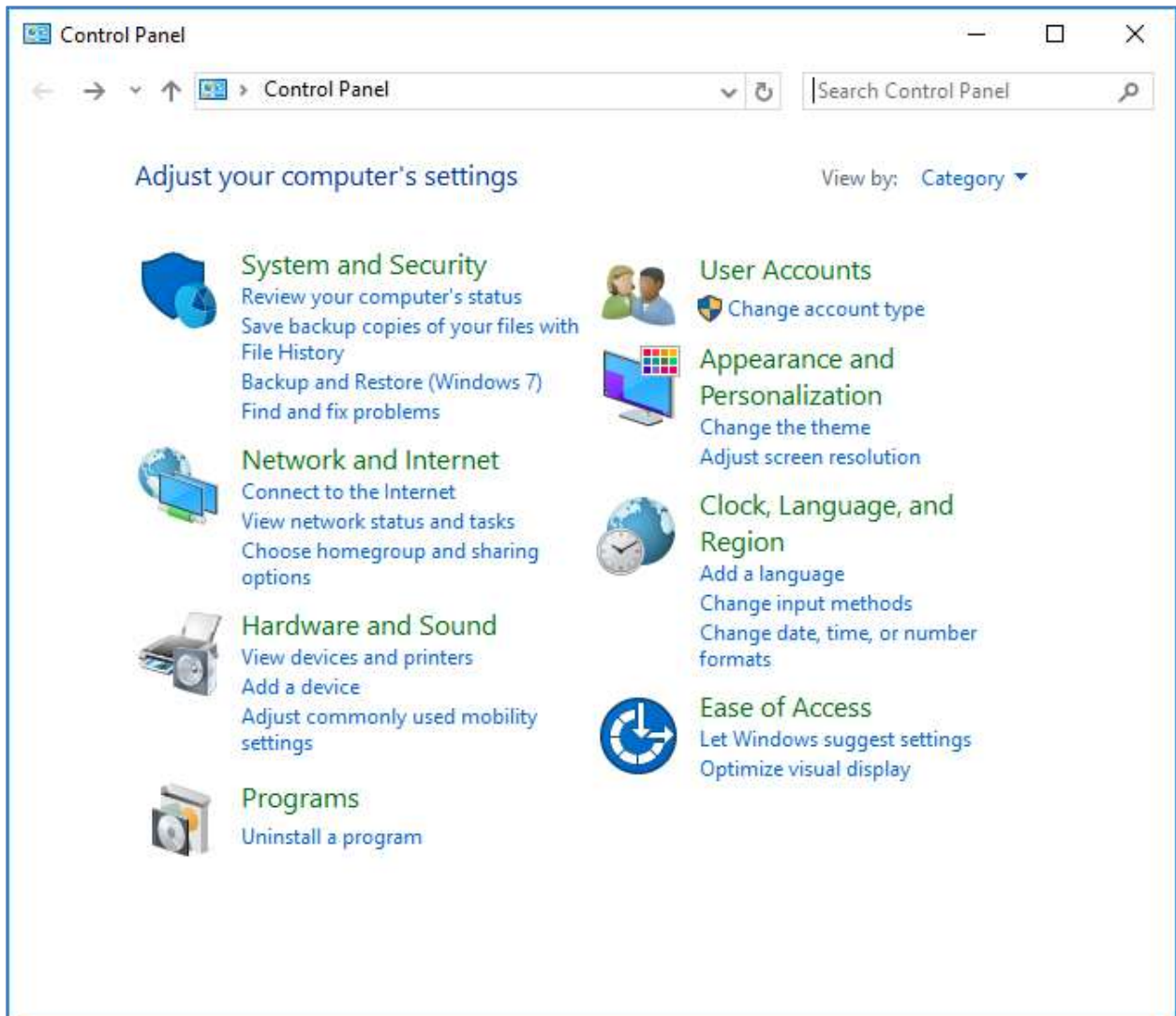


Figure 1

Step 2 – Region

Click the “Region” item (as show in Figure 2).

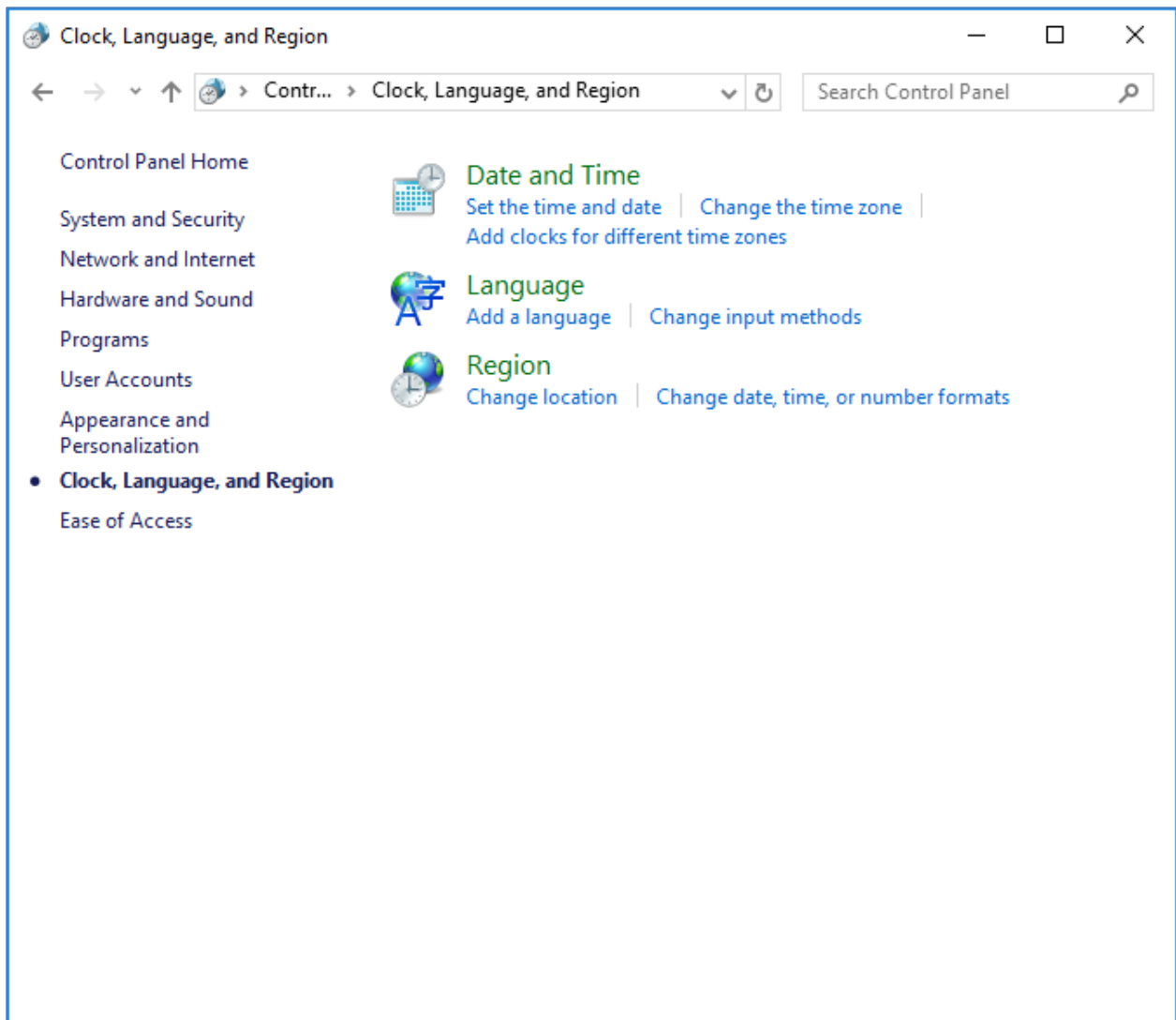


Figure 2

Step 3 – Formats Tab

Under “Formats” tab, go to “Format:” section, click drop down menu to select “English (United States)”, then click “Apply” (as shown in Figure 3).

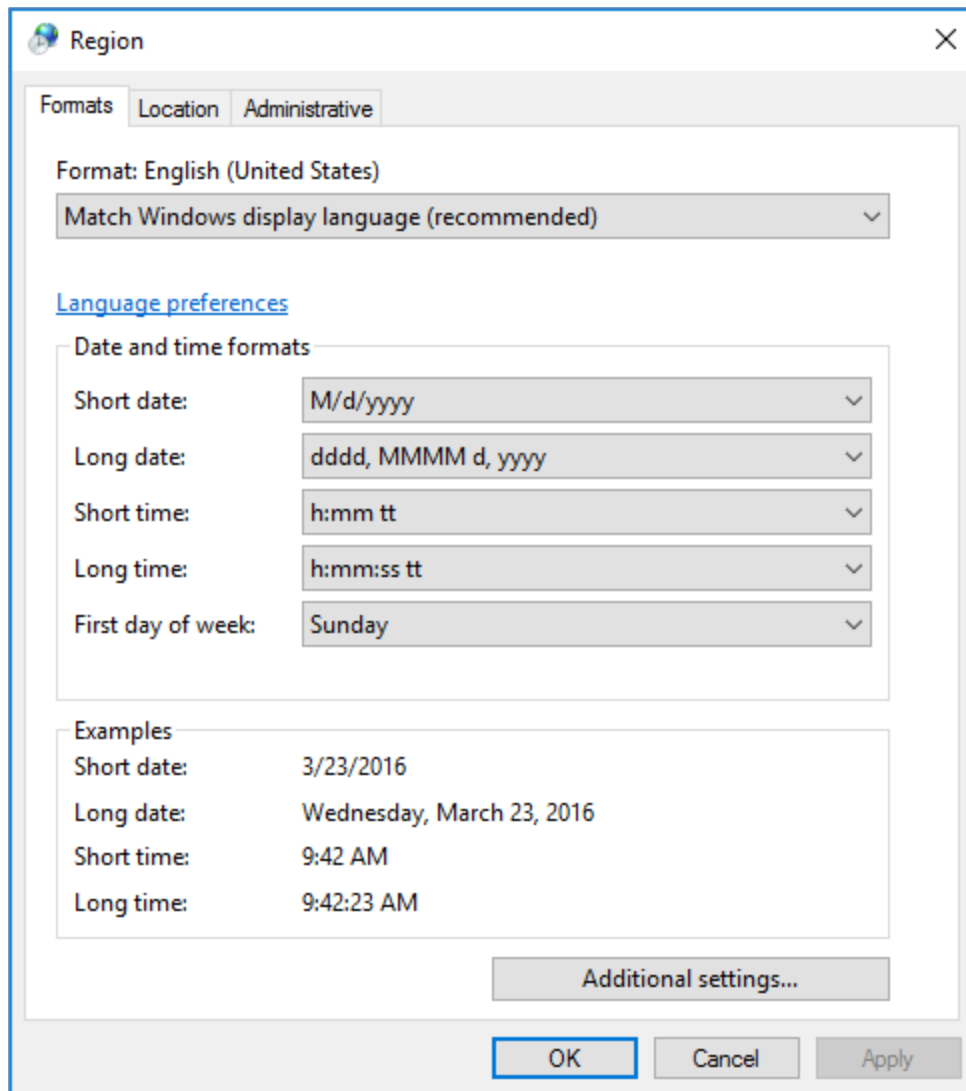


Figure 3

Step 4 – Location

Under “Location” tab, click drop down menu to select “United States” , then click “Apply” (as shown in Figure 4).

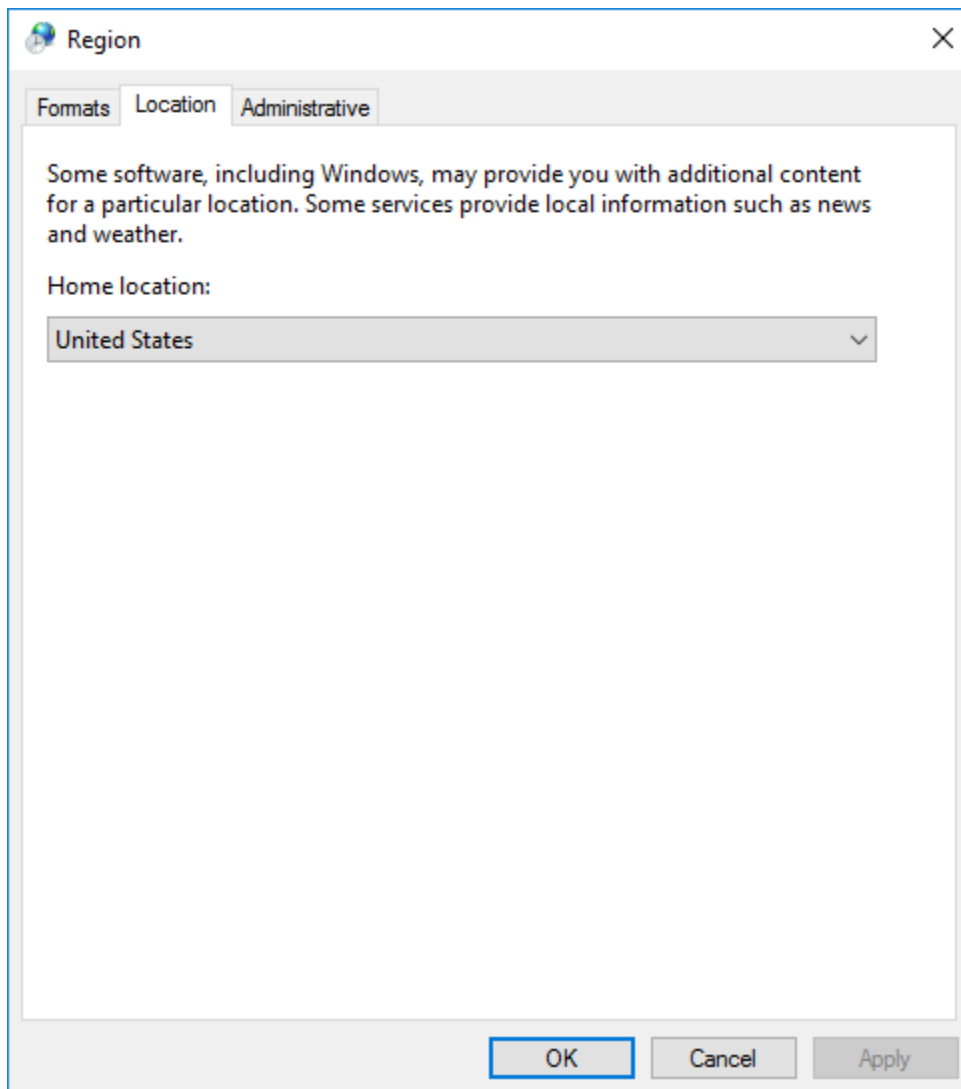


Figure 4

Step 5 – Administration – Copy settings

Under “Administrative” tab, go to “Welcome screen and new user accounts” section, click “Copy settings...” button (as shown in Figure 5).

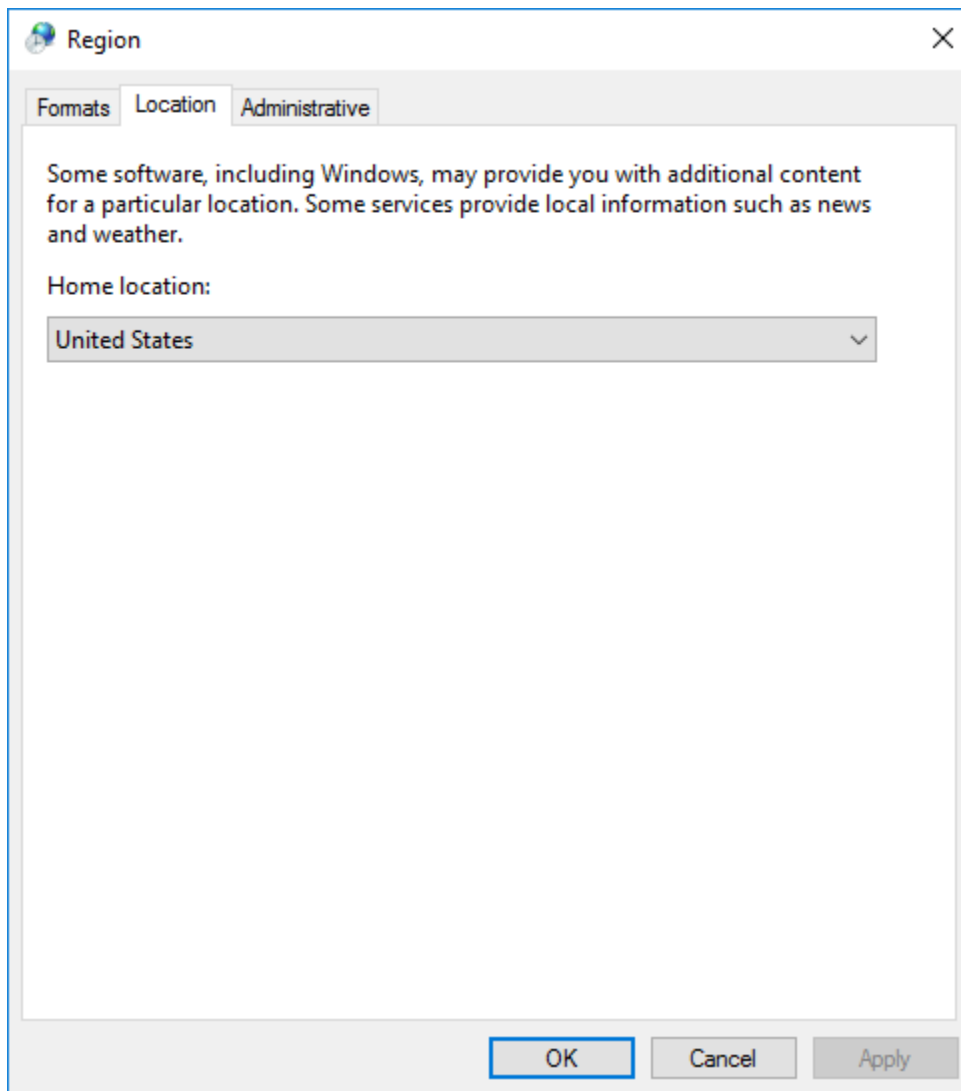


Figure 5

Under “Welcome screen and new user accounts settings”, check the boxes for “Welcome screen and system accounts” and “New user accounts” (as shown in Figure 6), click ‘Ok’ to confirm the settings and return to the “Administrative” tab.

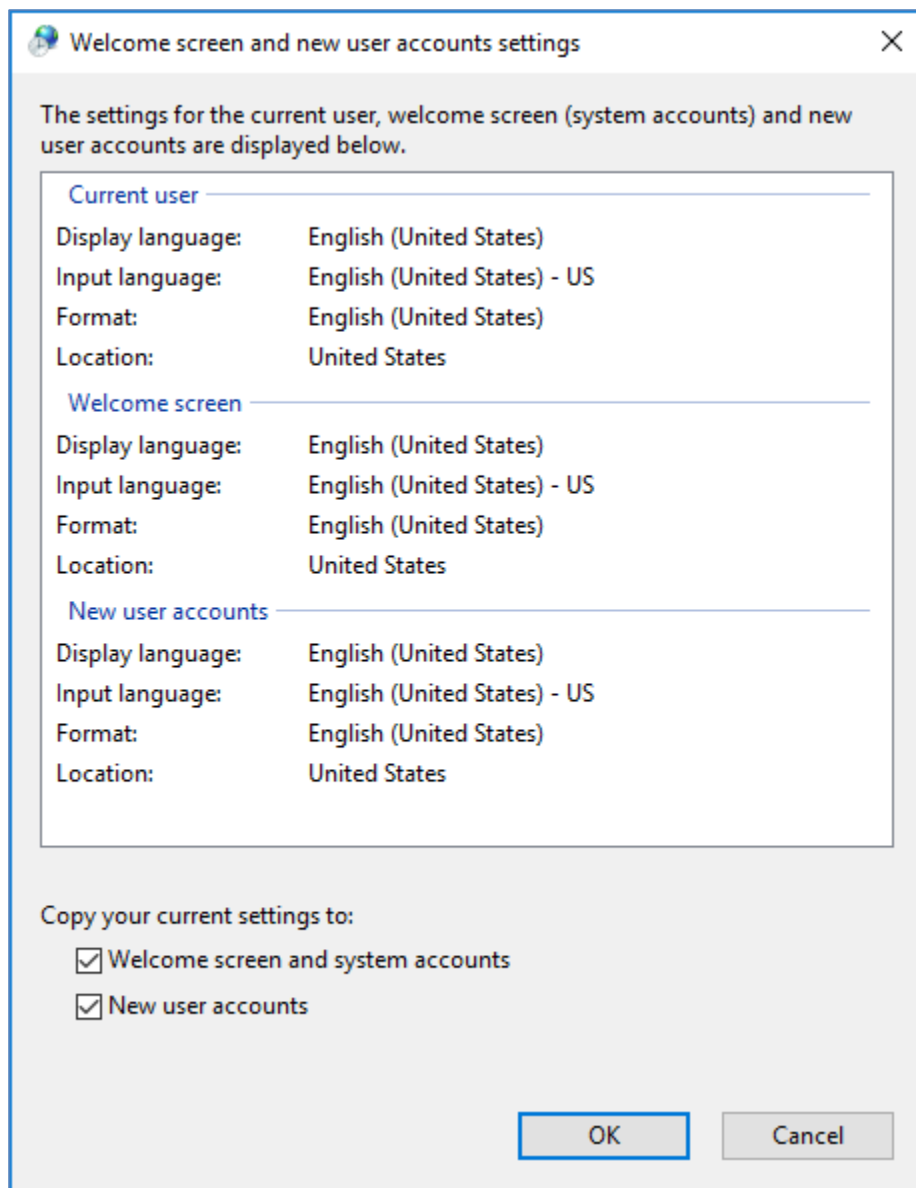


Figure 6

Step 6 – Administration – Change System Locale

Under “Administrative” tab, go to “Language for non-Unicode programs” section, click “Change System Locale...,” (as shown in figure 7).

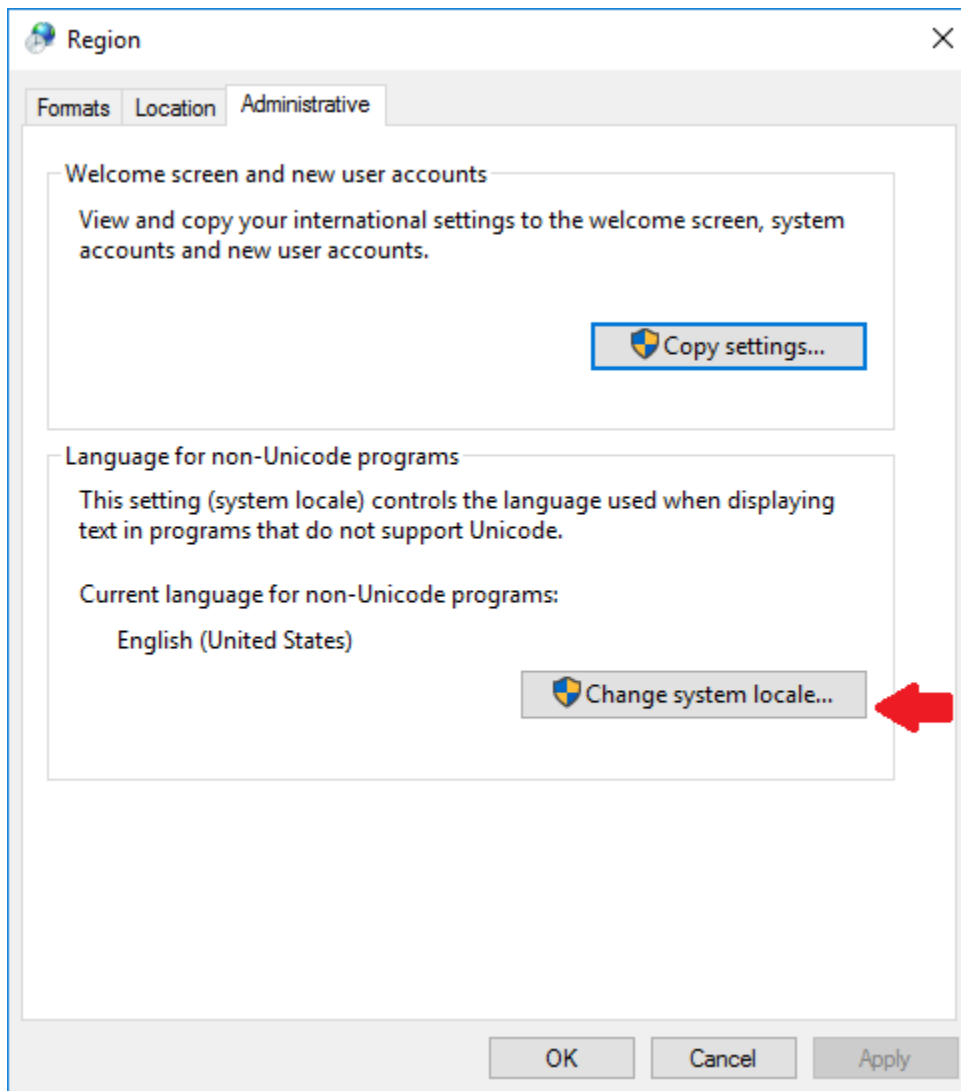


Figure 7

Then on the “Regional Settings” window (as shown in Figure 8), in the “Current system locale:” section, click drop down menu to select “English (United States)” and click “OK” to apply the setting.

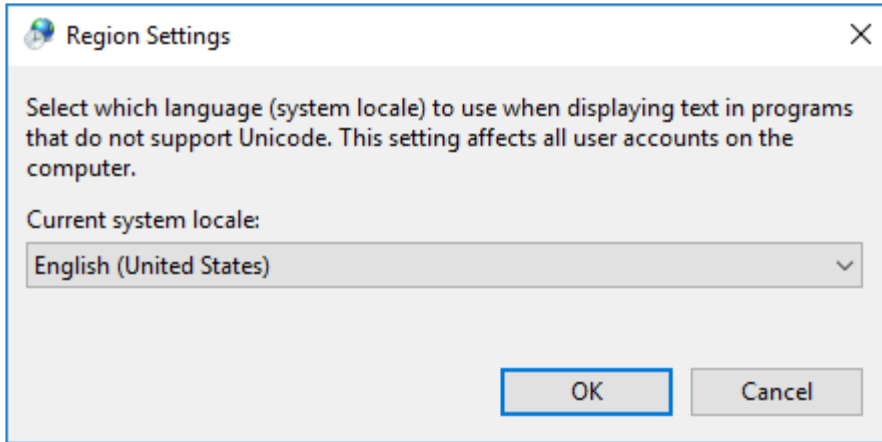


Figure 8

The “Change system locale” window will appear (as shown in Figure 9), click “Restart now” button to reboot the system.

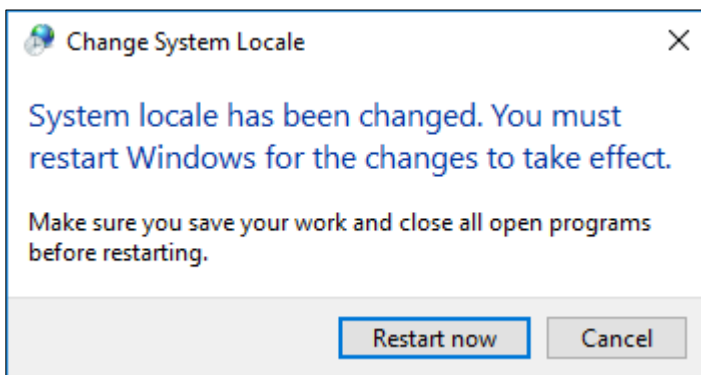


Figure 9

SYSmark or MobileMark may now be installed.