

## Instructions for sideload installation of TabletMark V3 for Android

### Prerequisite

- A host PC (running Windows, Linux or MacOS) to which you will connect the Android tablet you wish to benchmark, including:
  - ADB (Android Debug Bridge) installed and in working order (*see Appendix A for instructions on Windows*)
  - If the host PC is running Windows, ADB drivers for the tablet installed and in working order (*see instructions for your device*)

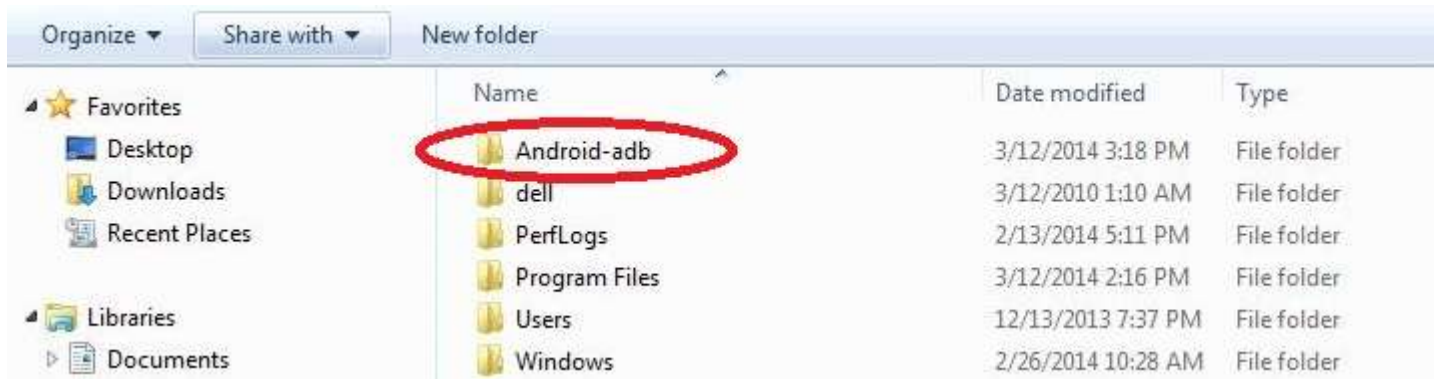
### Instructions

1. Download the zip file containing TabletMark V3 for Android.
  - You can find this file here: <http://bapco.com/products/support/tabletmark>
2. Unzip the zip file to a folder of your choice.
  - These instructions use this example: `\somefolder\tmv3`
3. Connect the Android tablet to the host PC via a USB cable.
4. Configure the tablet:
  - Settings > Security > Unknown sources: checkbox should be checked
  - Settings > Developer options > USB debugging: checkbox should be checked
5. From the host PC, open a terminal/command prompt and type the following commands:
  - `adb devices`
    - You should see a serial number followed by the tablet's name (or just "device")—if not, see Appendix B.
  - `cd \somefolder\tmv3`
    - Change to the folder you chose in step 2 containing the TabletMark V3 .apk file.
  - `adb install tabletmark.apk`
    - If you have installed the app correctly, then you will see the word "Success" displayed on screen.
  - `adb push Tabletmark.obb /sdcard/`
    - This may take several minutes.
6. Disconnect the tablet from the host PC.
7. Find the TabletMark icon in the tablet's app launcher and touch it to launch the benchmark.

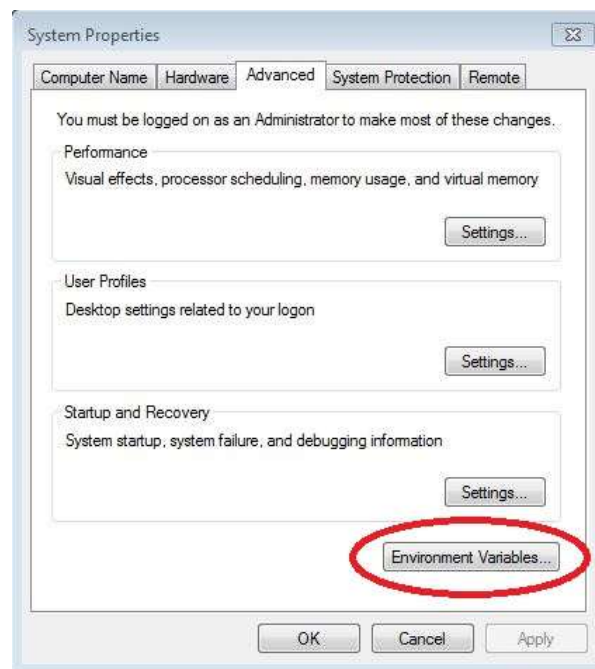
For support with TabletMark, please contact [support@bapco.com](mailto:support@bapco.com).

## Appendix A: Installing ADB on Windows host

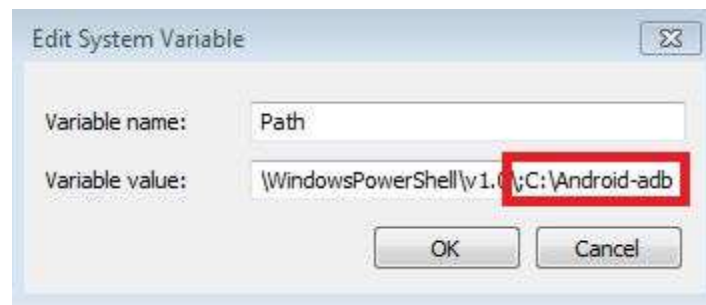
1. Download the [Android SDK for Windows](#).
2. Extract the Android SDK using an unzip tool such as [WinZip](#) or [7-zip](#), and move the “platform-tools” folder to the root of your C: drive. For the purposes of this guide, let’s rename it “Android-adb”.



3. Right-click your “My Computer” icon, click “Properties,” go to the “Advanced” tab, and then click on “Environment Variables.”



4. In the system variable box, scroll down until you see “path”, click it once to highlight it, and then click edit. Go to the very end of all the text that is already there, **DO NOT change anything**, and simply add:
  - a. ;C:\Android-adb



4. Right-click your "My Computer" icon, click "Properties," go to the "Advanced" tab, and then click on "Environment Variables." Click 'OK'.
5. Click 'OK'. ADB is now installed.

## Appendix B: Copying files to/from device

Since your Windows system is setup previously to communicate with the device. You can copy files to/from the device.

Moving files to the device simply by opening a command prompt and type in the following command.

```
adb push filename /sdcard/
```

*For example: adb push c:\myfile.txt /sdcard/*

Similarly, you can copy files from the device to your windows system using the following command.

```
adb pull /sdcard/filename
```

Your file will be save to same directory as displayed on the command prompt.